

# Incremental encoders

## Blind hollow shaft $\varnothing 16$ mm

### 300...2500 pulses per revolution

#### HOG 11 DNV



HOG 11 DNV

#### Features

- DNV approval
- Suitable for offshore, salt water firm
- High protection IP 67
- TTL output driver for cable length up to 550 m
- Very high resistance to shock and vibrations
- Hybrid bearing for extended lifetime
- Shaft insulation up to 2.8 kV
- Big terminal box, turn by 180° or axial terminal cover

#### Technical data - electrical ratings

Voltage supply	9...30 VDC 5 VDC $\pm 5$ %
Consumption w/o load	$\leq 100$ mA
Pulses per revolution	300...2500
Phase shift	$90^\circ \pm 20^\circ$
Scan ratio	30...70 %
Reference signal	Zero pulse, width $90^\circ$
Sensing method	Optical
Output frequency	$\leq 120$ kHz
Output signals	K1, K2, K0 + inverted
Output stages	HTL-P (power linedriver) TTL/RS422
Shaft insulation	2.8 kV
Transmission length	$\leq 350$ m at 100 kHz (HTL-P) $\leq 550$ m at 100 kHz (TTL)
Interference immunity	EN 61000-6-2
Emitted interference	EN 61000-6-3
Approvals	CE, UL approval / E256710, DNV approval
Location classes DNV	Temperature: D Humidity: B Vibration: B EMC: B Enclosure: C

#### Technical data - mechanical design

Size (flange)	$\varnothing 105$ mm
Shaft type	$\varnothing 16$ mm (blind hollow shaft)
Shaft loading	$\leq 250$ N axial $\leq 400$ N radial
Protection DIN EN 60529	IP 67
Operating speed	$\leq 6000$ rpm (mechanical)
Operating torque typ.	6 Ncm
Rotor moment of inertia	340 gcm <sup>2</sup>
Materials	Housing: aluminium die-cast Shaft: stainless steel
Operating temperature	$-40...+100$ °C
Resistance	IEC 60068-2-6 Vibration 20 g, 10-2000 Hz IEC 60068-2-27 Shock 300 g, 6 ms
Connection	Terminal box
Weight approx.	1.6 kg

# Incremental encoders

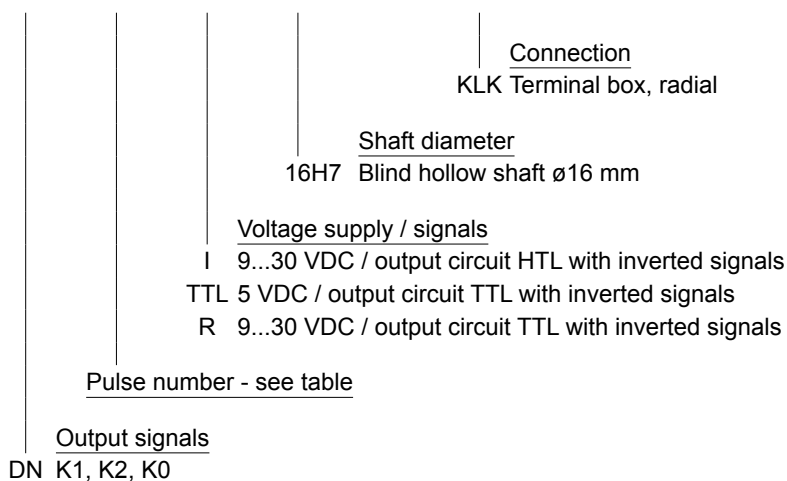
Blind hollow shaft  $\varnothing 16$  mm  
300...2500 pulses per revolution

HOG 11 DNV

## Part number

### Incremental encoder

HOG11 DN [ ] [ ] [ ] [ ] [ ] 16H7 SR KLK ERD (DNV)



## Pulse number

300	512	1024	2048
500	1000	1200	2500

Other pulse numbers on request.

## Accessories

### Connectors and cables

HEK 8 Sensor cable for encoders

### Mounting accessories

DMS 6 Torque arm size M6

11077197 Mounting kit for torque arm size M6 and earthing strap

11077087 Mounting and dismounting set

### Diagnostic accessories

HENQ 1100 Analyzer for encoders

Subject to modification in technic and design. Errors and omissions excepted.

# Incremental encoders

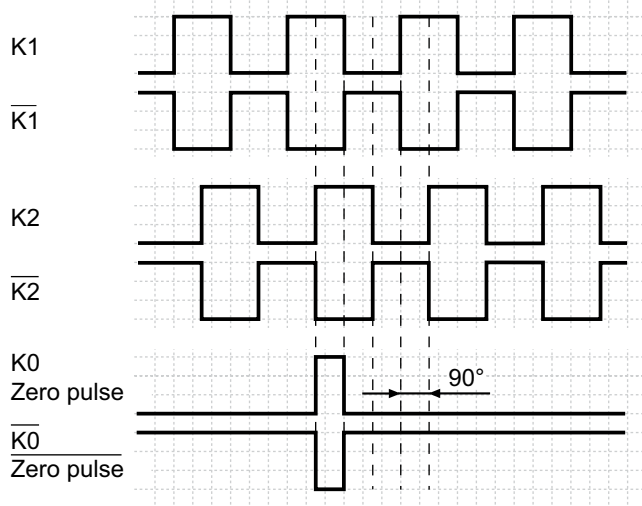
Blind hollow shaft  $\varnothing 16$  mm

300...2500 pulses per revolution

## HOG 11 DNV

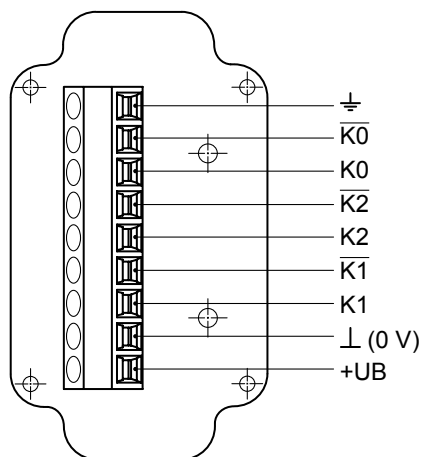
### Output signals

At positive rotating direction



### Terminal assignment

View A - Connecting terminal in terminal box



# Incremental encoders

Blind hollow shaft  $\varnothing 16$  mm  
300...2500 pulses per revolution

HOG 11 DNV

## Dimensions

